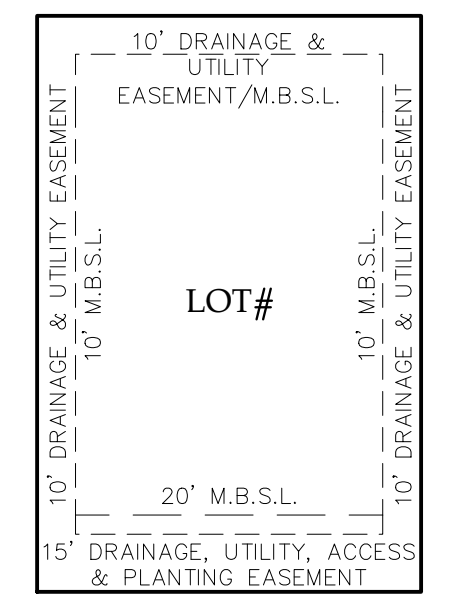


- LEGEND**
- EXISTING ASPHALT PAVEMENT
 - EXISTING IRON ROD
 - CALCULATED POINT
 - EXISTING TELEPHONE
 - EXISTING CABLE
 - EXISTING TRANSFORMER
 - EXISTING FIRE HYDRANT
 - EXISTING WATER VALVE
 - EXISTING CONTOUR
 - FIRM ZONE BOUNDARY
 - EXISTING STORMWATER PIPE
 - EXISTING WATERLINE
 - EXISTING FOREMAIN
 - EXISTING TELEPHONE
 - EXISTING CABLE
 - EXISTING FIBER OPTIC
 - EXISTING DITCH

SHEET INDEX

1 OVERALL LAYOUT
2 UTILITY PLAN



NOTE: THIS DOCUMENT IS PRELIMINARY - NOT FOR CONSTRUCTION, RECORDATION, SALES OR CONVEYANCES - THIS DOCUMENT IS FOR DISCUSSION PURPOSES ONLY! EXISTING INFORMATION SHOWN ON THIS DOCUMENT IS BASED ON BEST AVAILABLE DATA AND IS NOT A CERTIFIED SURVEY. ALL INFORMATION SHOWN ON THIS DOCUMENT IS SUBJECT TO ANY REQUIREMENTS BY ANY REGULATORY AGENCY, ENTITY OR AUTHORITY.

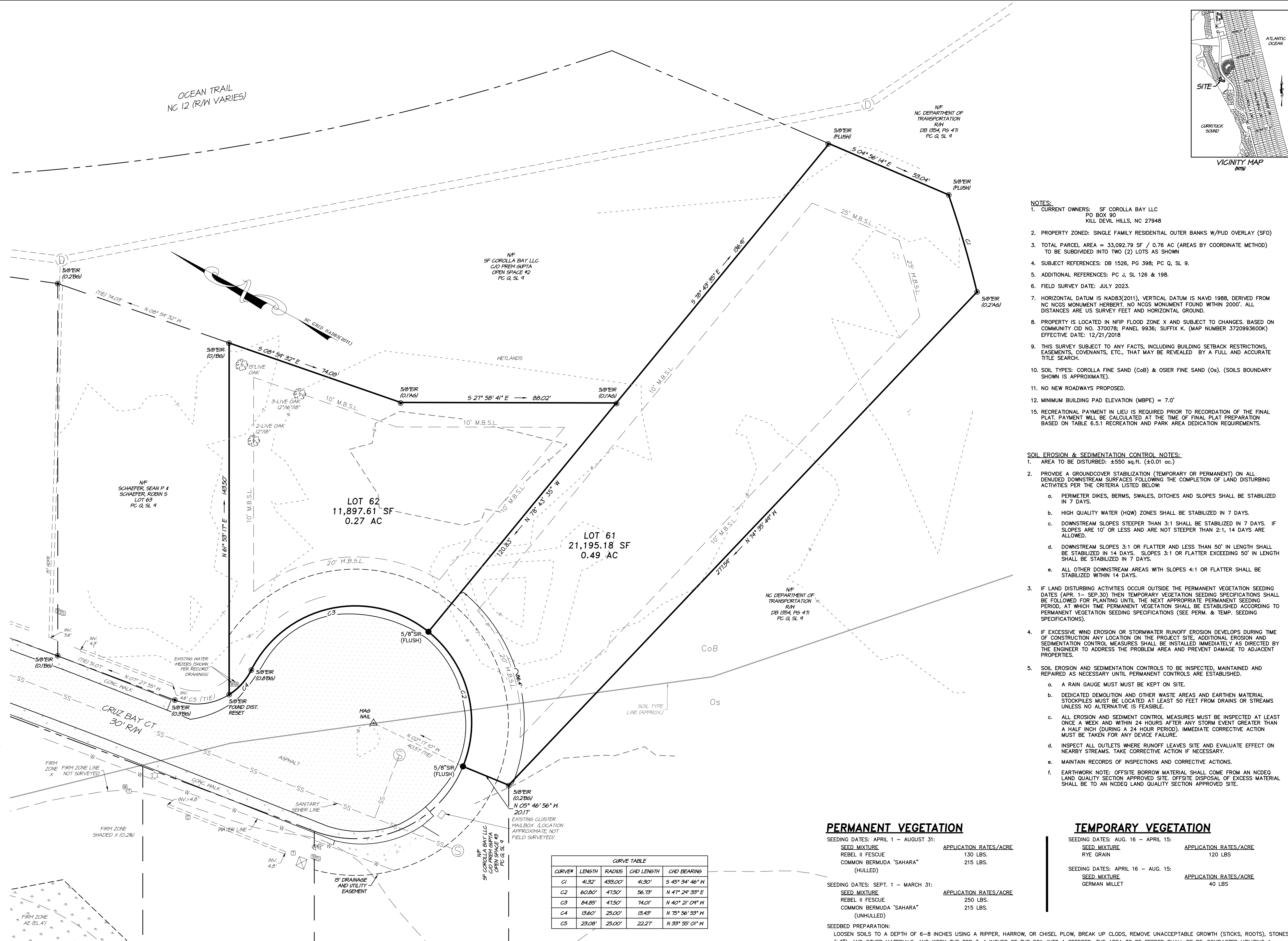
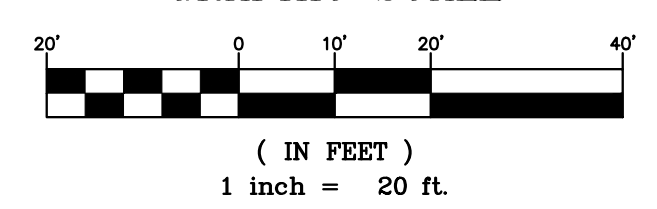
QUIBLE & ASSOCIATES, P.C. DOES NOT GUARANTEE THE ACCURACY OR THE COMPLETENESS OF ANY INFORMATION IN THIS DOCUMENT AND IS NOT RESPONSIBLE FOR ANY ERROR OR OMISSION OR ANY LOSSES OR DAMAGES RESULTING FROM THE USE OF THIS INFORMATION.



Know what's below.
Call before you dig.

NOTE: THE DATA GIVEN ON THESE PLANS IS BELIEVED TO BE ACCURATE, BUT THE ACCURACY IS NOT GUARANTEED. THE CONTRACTOR IS RESPONSIBLE FOR VERIFYING ALL LEVELS, LOCATIONS, TYPES, AND DIMENSIONS OF THE EXISTING UTILITIES PRIOR TO CONSTRUCTION. IF A DISCREPANCY IS FOUND, WORK SHALL CEASE AND THE ENGINEER NOTIFIED. WORK MAY CONTINUE UPON ENGINEER'S NOTICE TO PROCEED.

GRAPHIC SCALE



CURVE TABLE

CURVE	LENGTH	RADIUS	CHD LENGTH	CHD BEARING
C1	41.32'	493.00'	41.30'	S 49° 34' 46" W
C2	60.00'	4150'	56.73'	N 41° 24' 33" E
C3	84.88'	4150'	74.01'	N 40° 21' 04" W
C4	13.60'	25.00'	13.49'	N 79° 56' 53" W
C5	23.08'	25.00'	22.27'	N 33° 55' 01" W

PERMANENT VEGETATION

SEEDING DATES: APRIL 1 - AUGUST 31:

SEED MIXTURE	APPLICATION RATES/ACRE
REBEL II FESCUE	130 LBS.
COMMON BERMUDA "SAHARA" (HULLED)	215 LBS.

SEEDING DATES: SEPT. 1 - MARCH 31:

SEED MIXTURE	APPLICATION RATES/ACRE
REBEL II FESCUE	250 LBS.
COMMON BERMUDA "SAHARA" (UNHULLED)	215 LBS.

TEMPORARY VEGETATION

SEEDING DATES: AUG. 16 - APRIL 15:

SEED MIXTURE	APPLICATION RATES/ACRE
RYE GRAIN	120 LBS.

SEEDING DATES: APRIL 16 - AUG. 15:

SEED MIXTURE	APPLICATION RATES/ACRE
GERMAN MILLET	40 LBS.

SEEDING SPECIFICATIONS

SEEDBED PREPARATION:
LOOSEN SOILS TO A DEPTH OF 6-8 INCHES USING A RIPPER, HARROW, OR CHISEL PLOW. BREAK UP CLODS, REMOVE UNACCEPTABLE GROWTH (STICKS, ROOTS), STONES (>3"), AND OTHER MATERIALS, AND WORK THE TOP 3-4 INCHES OF THE SOIL INTO A SEEDBED. THE AREA TO BE SEEDBED SHALL BE RE-COMPACTED UTILIZING A CULTIPACKER ROLLER AND A SMOOTH EVEN SOIL SURFACE WITH A LOOSE, UNIFORMLY FINE TEXTURE SHALL BE THE FINISHED GRADE.

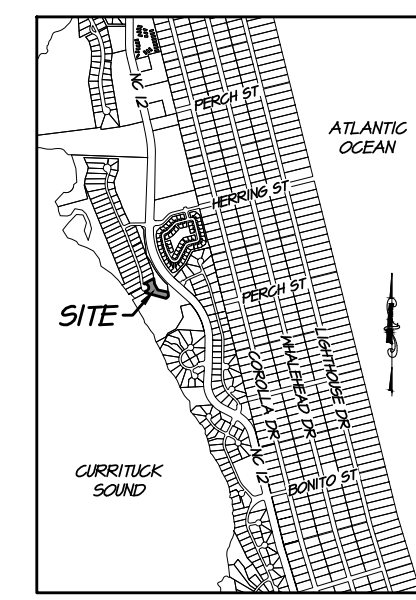
SOL AMENDMENTS:
OBTAIN A SOIL TEST TO DETERMINE APPLICATION RATES AND FOLLOW RECOMMENDATIONS OF SOIL TESTS. WHEN A SOIL TEST IS NOT POSSIBLE, APPLY 3,000 LB/ACRE GROUND AGRICULTURAL LIMESTONE AND 1,000 LB/ACRE 10-10-10 STARTER FERTILIZER.

MULCHING:
APPLY 4,000 LB/ACRE GRAIN STRAW OR EQUIVALENT COVER OF ANOTHER SUITABLE MULCH. ANCHOR STRAW BY TACKLING WITH ASPHALT, NETTING, ROVING OR BY CRIMPING WITH A MULCH ANCHORING TOOL.

MAINTENANCE:
SATISFACTORY STABILIZATION AND EROSION CONTROL REQUIRES A COMPLETE VEGETATIVE COVER. EVEN SMALL BREACHES IN VEGETATIVE COVER CAN EXPAND RAPIDLY AND, IF LEFT UNATTENDED, CAN ALLOW SERIOUS SOIL LOSS FROM AN OTHERWISE STABLE SURFACE. A SINGLE HEAVY RAIN IS OFTEN SUFFICIENT TO GREATLY ENLARGE BARE SPOTS, AND THE LONGER REPAIRS ARE DELAYED, THE MORE COSTLY THEY BECOME. PROMPT ACTION WILL KEEP SEDIMENT LOSS AND REPAIR COSTS DOWN. NEW SEEDLINGS SHOULD BE INSPECTED FREQUENTLY AND MAINTENANCE PERFORMED AS NEEDED. IF RILLS AND GULLIES DEVELOP, THEY MUST BE FILLED IN, RE-SEEDDED, AND MULCHED AS SOON AS POSSIBLE. DIVERSIONS MAY BE NEEDED UNTIL NEW PLANTS TAKE HOLD.

MAINTENANCE REQUIREMENTS EXTEND BEYOND THE SEEDING PHASE. (COMPLETE VEGETATIVE COVER IS REQUIRED REGARDLESS OF THE ISSUANCE OF A CERTIFICATE OF OCCUPANCY AND FINAL PAYMENT WILL NOT BE AWARDED UNTIL COMPLETE ESTABLISHMENT OF VEGETATIVE COVER.) WEAK OR DAMAGED SPOTS MUST BE RELIEM, FERTILIZED, MULCHED, AND RESEEDED AS PROMPTLY AS POSSIBLE. REFERTILIZATION MAY BE NEEDED TO MAINTAIN PRODUCTIVE STANDS.

SEEDING SPECIFICATIONS



- NOTES:**
- CURRENT OWNERS: SF COROLLA BAY LLC
PO BOX 90
KILL DEVIL HILLS, NC 27948
 - PROPERTY ZONED: SINGLE FAMILY RESIDENTIAL OUTER BANKS W/PUD OVERLAY (SFO) TO BE SUBDIVIDED INTO TWO (2) LOTS AS SHOWN
 - TOTAL PARCEL AREA = 33,092.79 SF / 0.76 AC (AREAS BY COORDINATE METHOD)
 - SUBJECT REFERENCES: DB 1526, PG 398; PG Q, SL 9.
 - ADDITIONAL REFERENCES: PG J, SL 126 & 198.
 - FIELD SURVEY DATE: JULY 2023.
 - HORIZONTAL DATUM IS NAD83(2011), VERTICAL DATUM IS NAVD 1988, DERIVED FROM NO NCOS MONUMENT HERBERT. NO NCOS MONUMENT FOUND WITHIN 2000'. ALL DISTANCES ARE US SURVEY FEET AND HORIZONTAL GROUND.
 - PROPERTY IS LOCATED IN NFIP FLOOD ZONE X AND SUBJECT TO CHANGES, BASED ON COMMUNITY ID NO. 370078; PANEL 9936; SUFFIX K. (MAP NUMBER 3720993600K) EFFECTIVE DATE: 12/21/2018
 - THIS SURVEY SUBJECT TO ANY FACTS, INCLUDING BUILDING SETBACK RESTRICTIONS, EASEMENTS, COVENANTS, ETC., THAT MAY BE REVEALED BY A FULL AND ACCURATE TITLE SEARCH.
 - SOIL TYPES: COROLLA FINE SAND (CoB) & OSIER FINE SAND (Os). (SOILS BOUNDARY SHOWN IS APPROXIMATE).
 - NO NEW ROADWAYS PROPOSED.
 - MINIMUM BUILDING PAD ELEVATION (MBPE) = 7.0'
 - RECREATIONAL PAYMENT IN LIEU IS REQUIRED PRIOR TO RECORDATION OF THE FINAL PLAT. PAYMENT WILL BE CALCULATED AT THE TIME OF FINAL PLAT PREPARATION BASED ON TABLE 6.5.1 RECREATION AND PARK AREA DEDICATION REQUIREMENTS.

SOIL EROSION & SEDIMENTATION CONTROL NOTES:

- AREA TO BE DISTURBED: ±550 sq.ft. (±0.01 ac.)
- PROVIDE A GROUND COVER STABILIZATION (TEMPORARY OR PERMANENT) ON ALL DENuded DOWNSTREAM SURFACES FOLLOWING THE COMPLETION OF LAND DISTURBING ACTIVITIES PER THE CRITERIA LISTED BELOW.
 - PERIMETER DIKES, BERMS, SWALES, DITCHES AND SLOPES SHALL BE STABILIZED IN 7 DAYS.
 - HIGH QUALITY WATER (HOW) ZONES SHALL BE STABILIZED IN 7 DAYS.
 - DOWNSLOPE SLOPES STEEPER THAN 3:1 SHALL BE STABILIZED IN 7 DAYS. IF SLOPES ARE 10' OR LESS AND ARE NOT STEEPER THAN 2:1, 14 DAYS ARE ALLOWED.
 - DOWNSLOPE SLOPES 3:1 OR FLATTER AND LESS THAN 50' IN LENGTH SHALL BE STABILIZED IN 14 DAYS. SLOPES 3:1 OR FLATTER EXCEEDING 50' IN LENGTH SHALL BE STABILIZED IN 7 DAYS.
 - ALL OTHER DOWNSLOPE AREAS WITH SLOPES 4:1 OR FLATTER SHALL BE STABILIZED WITHIN 14 DAYS.
- IF LAND DISTURBING ACTIVITIES OCCUR OUTSIDE THE PERMANENT VEGETATION SEEDING DATES (APR. 1 - SEP. 30) THEN TEMPORARY VEGETATION SEEDING SPECIFICATIONS SHALL BE FOLLOWED FOR PLANTING UNTIL THE NEXT APPROPRIATE PERMANENT SEEDING PERIOD, AT WHICH TIME PERMANENT VEGETATION SHALL BE ESTABLISHED ACCORDING TO PERMANENT VEGETATION SEEDING SPECIFICATIONS (SEE PERM. & TEMP. SEEDING SPECIFICATIONS).
- IF EXCESSIVE WIND EROSION OR STORMWATER RUNOFF EROSION DEVELOPS DURING TIME OF CONSTRUCTION ANY LOCATION ON THE PROJECT SITE, ADDITIONAL EROSION AND SEDIMENTATION CONTROL MEASURES SHALL BE INSTALLED IMMEDIATELY AS DIRECTED BY THE ENGINEER TO ADDRESS THE PROBLEM AREA AND PREVENT DAMAGE TO ADJACENT PROPERTIES.
- SOIL EROSION AND SEDIMENTATION CONTROLS TO BE INSPECTED, MAINTAINED AND REPAIRED AS NECESSARY UNTIL PERMANENT CONTROLS ARE ESTABLISHED.
 - A RAIN GAUGE MUST BE KEPT ON SITE.
 - DEDICATED DEMOLITION AND OTHER WASTE AREAS AND EARTHEN MATERIAL STOCKPILES MUST BE LOCATED AT LEAST 50 FEET FROM DRAINS OR STREAMS UNLESS NO ALTERNATIVE IS FEASIBLE.
 - ALL EROSION AND SEDIMENT CONTROL MEASURES MUST BE INSPECTED AT LEAST ONCE A WEEK AND WITHIN 24 HOURS AFTER ANY STORM EVENT GREATER THAN A HALF INCH (DURING A 24 HOUR PERIOD). IMMEDIATE CORRECTIVE ACTION MUST BE TAKEN FOR ANY DEVICE FAILURE.
 - INSPECT ALL OUTLETS WHERE RUNOFF LEAVES SITE AND EVALUATE EFFECT ON NEARBY STREAMS. TAKE CORRECTIVE ACTION IF NECESSARY.
 - MAINTAIN RECORDS OF INSPECTIONS AND CORRECTIVE ACTIONS.
- EARTHWORK NOTE: OFFSITE BORROW MATERIAL SHALL COME FROM AN NCDQS LAND QUALITY SECTION APPROVED SITE. OFFSITE DISPOSAL OF EXCESS MATERIAL SHALL BE TO AN NCDQS LAND QUALITY SECTION APPROVED SITE.

NC License # C-028
SINCE 1959

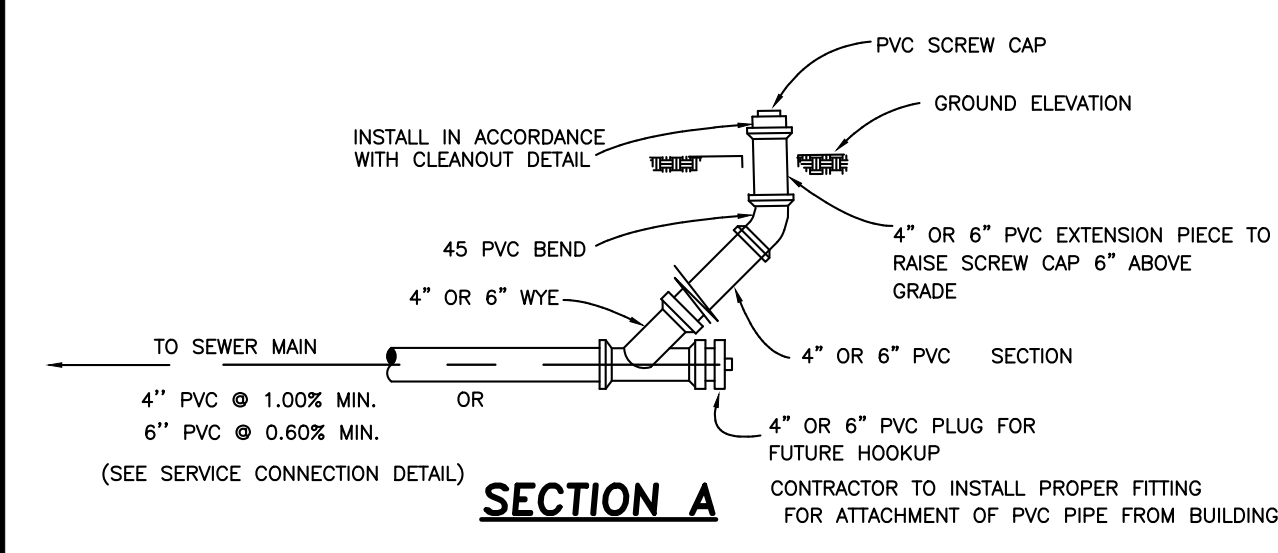
Quible & Associates, P.C.
ENGINEERS, ARCHITECTS, PLANNERS, SURVEYORS
ENVIRONMENTAL SCIENCES & SURVEYING
ENGINEERING/SURVEYING NOT OFFERED AT BLACK MOUNTAIN OFFICE
8446 GARDNER HWY
90 CHURCH STREET
BLACK MOUNTAIN, NC 27686
Phone: (828) 682-8427
Fax: (828) 682-9149
www.quible.com

CONSTRUCTION DRAWINGS
COROLLA BAY, SECTION 2

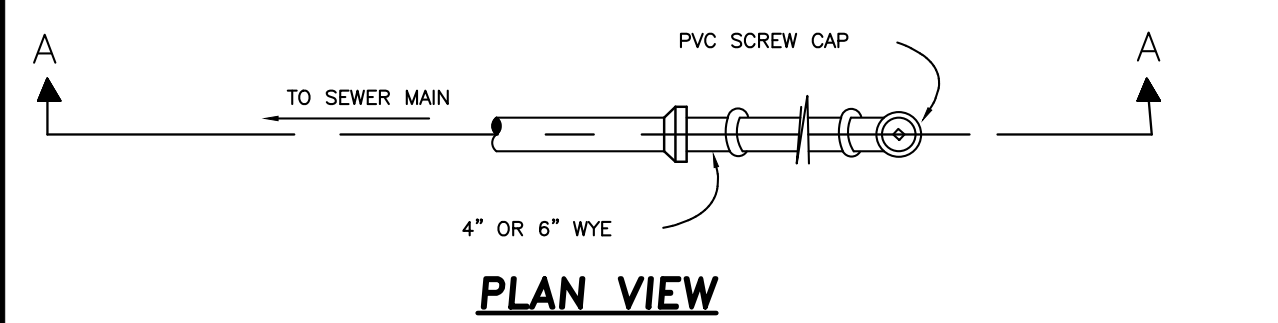
POPLAR BRANCH TOWNSHIP CURRITUCK COUNTY NORTH CAROLINA

PROJECT NO. P99006.1
DESIGNED BY CMS
DRAWN BY CMS
CHECKED BY MWS
ISSUE DATE 08/23/23

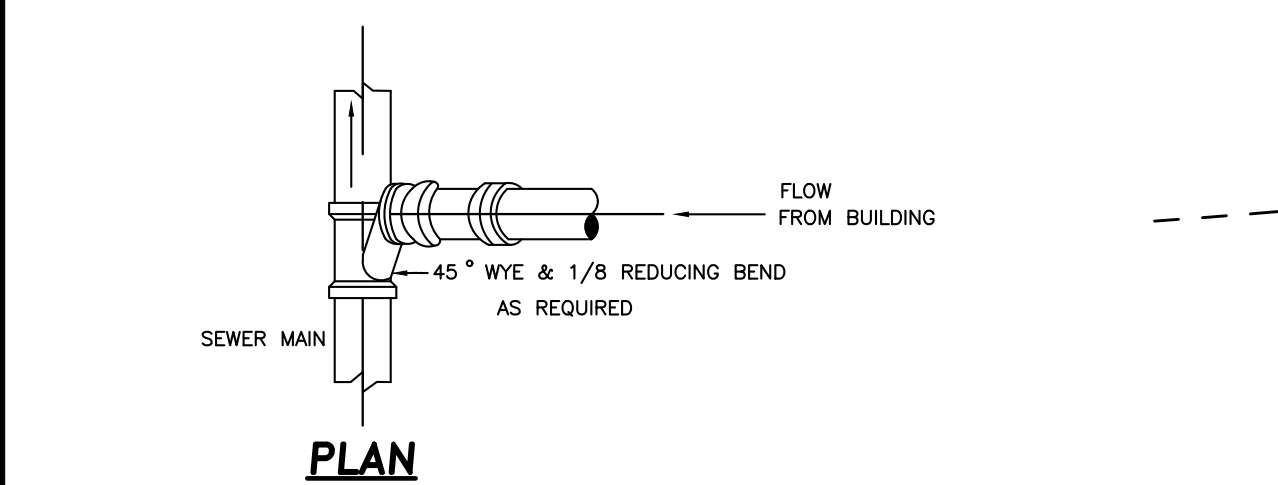
SHEET NO. 1 OF 2 SHEETS



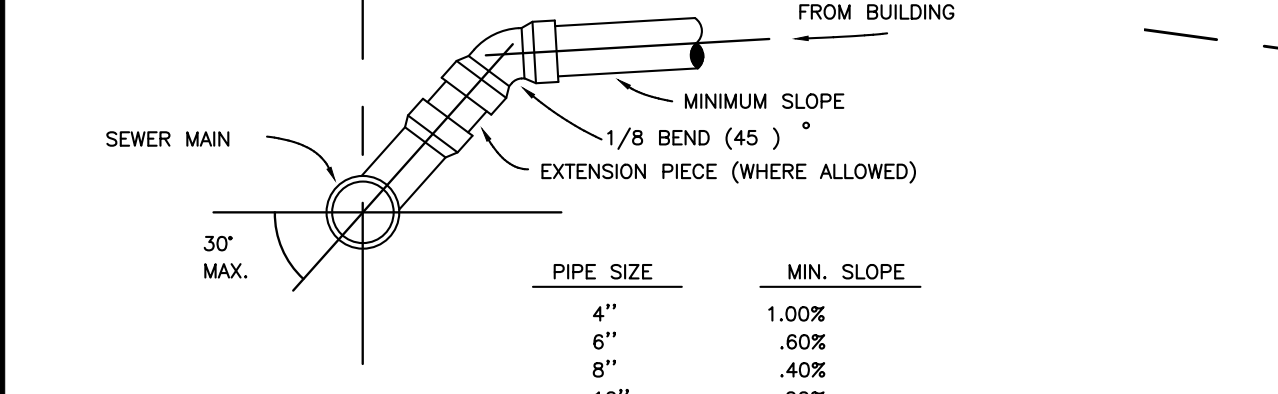
SECTION A
SINGLE SERVICE LATERAL CONNECTION
N.T.S.



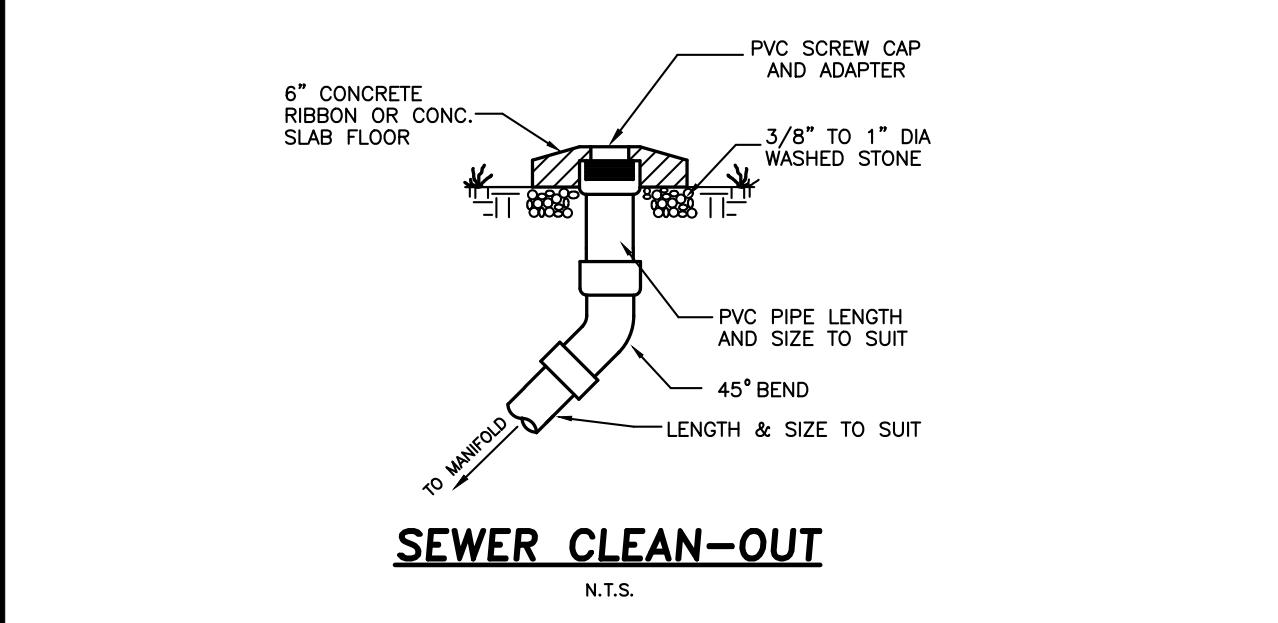
PLAN VIEW
SINGLE SERVICE LATERAL CONNECTION
N.T.S.



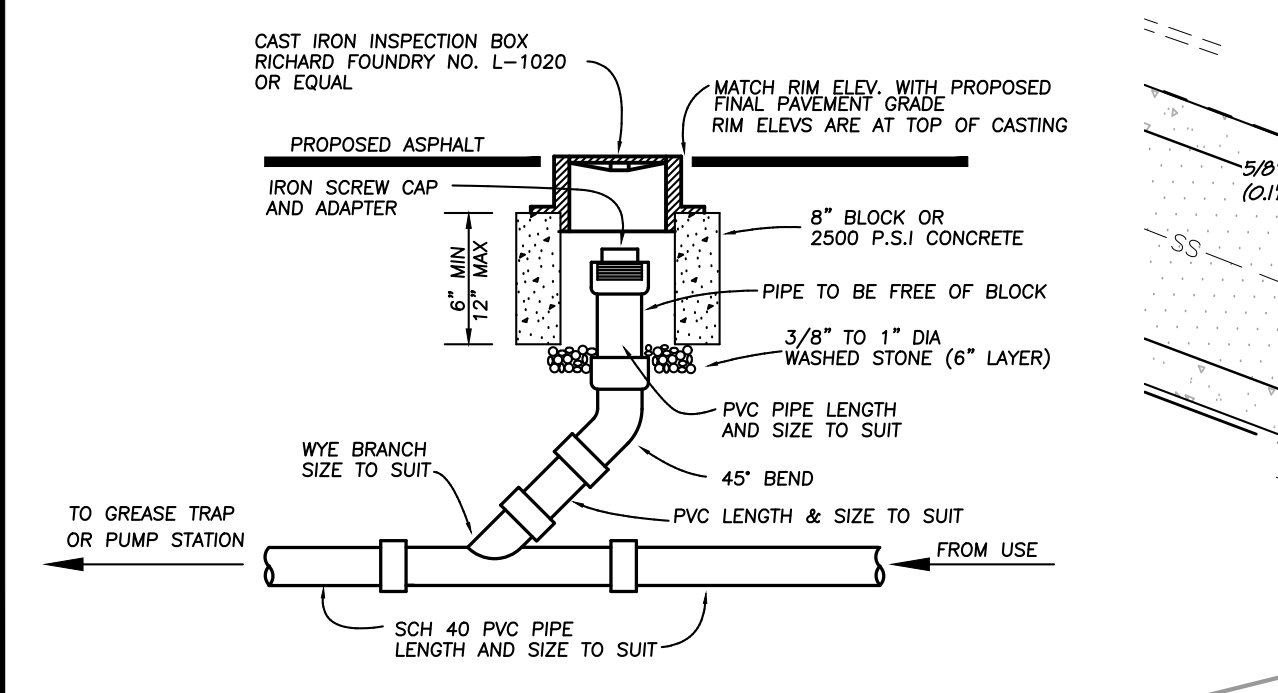
SECTION
SERVICE CONNECTION
N.T.S.



PLAN
SERVICE CONNECTION
N.T.S.



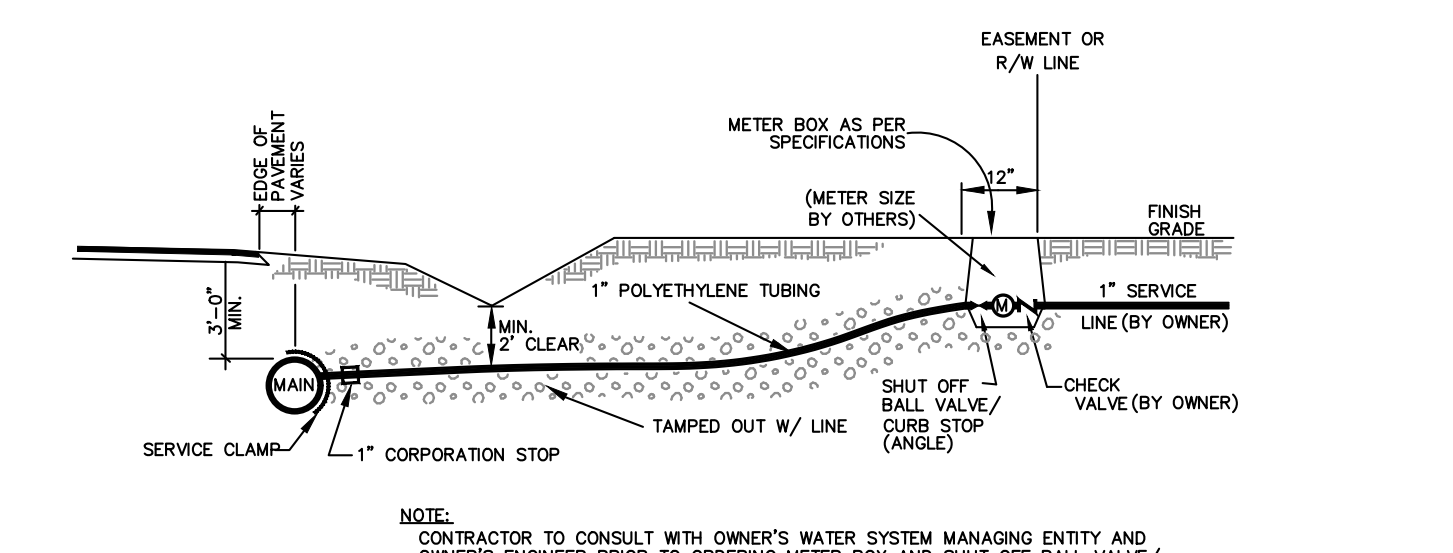
SECTION
SEWER CLEAN-OUT WITHIN PAVEMENT
N.T.S.



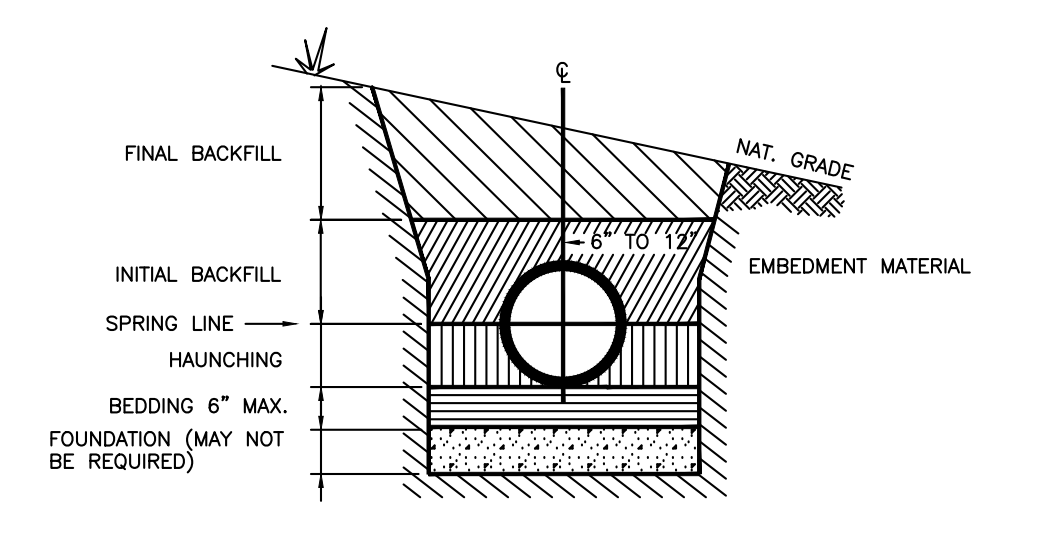
SECTION
SEWER CLEAN-OUT
N.T.S.

NOTE: THIS DOCUMENT IS PRELIMINARY - NOT FOR CONSTRUCTION, RECORDATION, SALES OR CONVEYANCES - THIS DOCUMENT IS FOR DISCUSSION PURPOSES ONLY! EXISTING INFORMATION SHOWN ON THIS DOCUMENT IS BASED ON BEST AVAILABLE DATA AND IS NOT A CERTIFIED SURVEY. ALL INFORMATION SHOWN ON THIS DOCUMENT IS SUBJECT TO ANY REQUIREMENTS BY ANY REGULATORY AGENCY, ENTITY OR AUTHORITY.

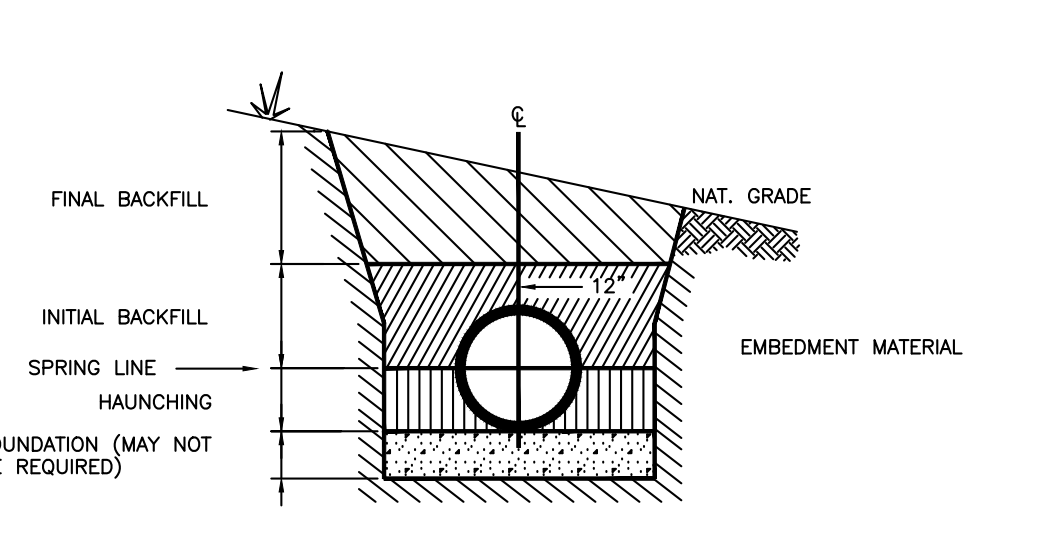
QUIBLE & ASSOCIATES, P.C. DOES NOT GUARANTEE THE ACCURACY OR THE COMPLETENESS OF ANY INFORMATION IN THIS DOCUMENT AND IS NOT RESPONSIBLE FOR ANY ERROR OR OMISSION OR ANY LOSSES OR DAMAGES RESULTING FROM THE USE OF THIS INFORMATION.



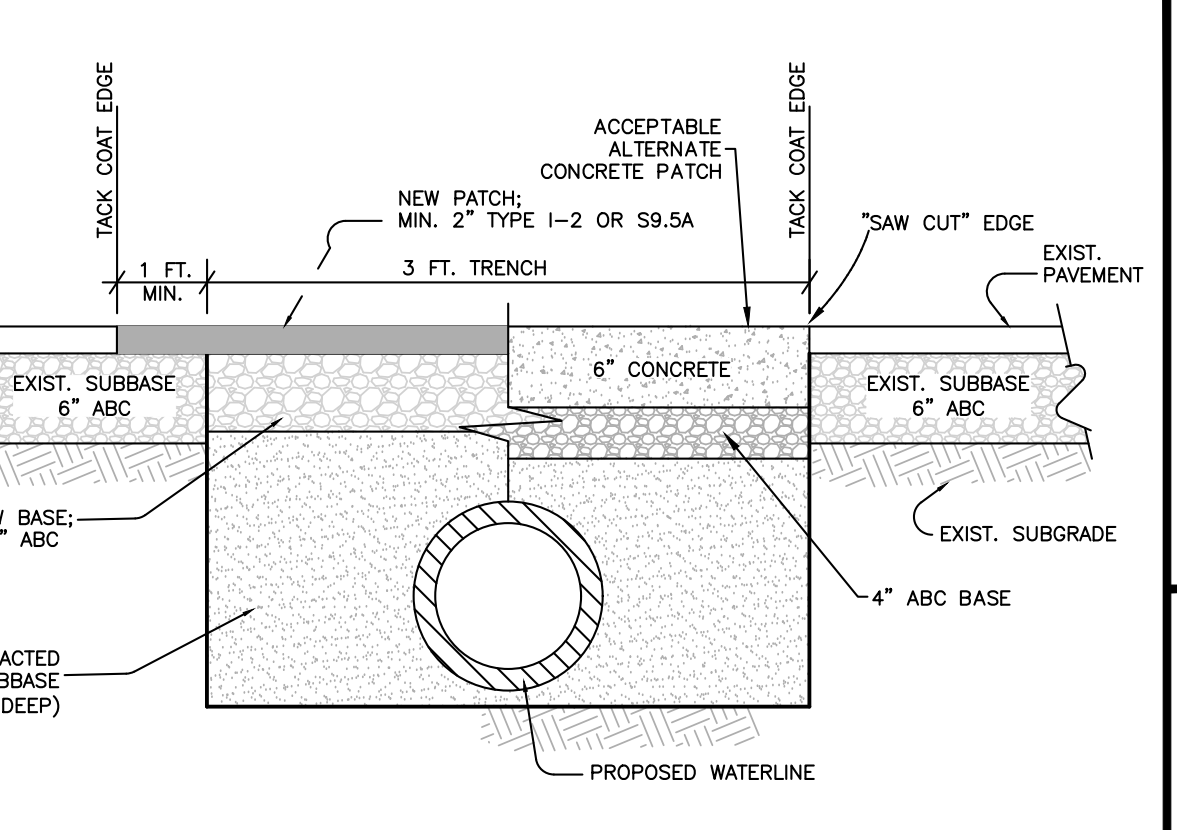
SECTION
STANDARD WATER SERVICE LINE AND METER BOX INSTALLATION
N.T.S.



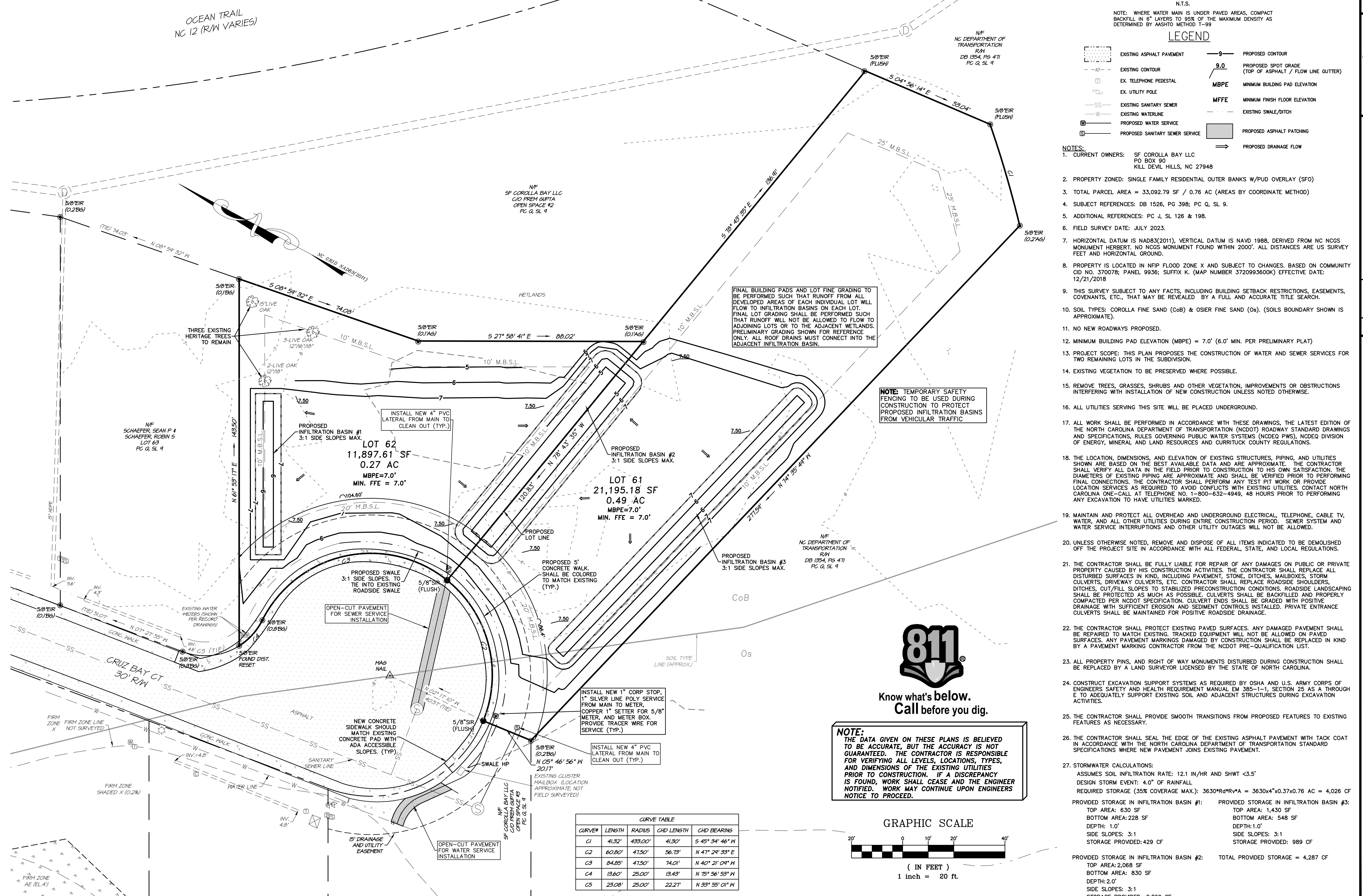
SECTION
GRAVITY SEWER EMBEDMENT CONDITIONS FOR FLEXIBLE AND SEMI-RIGID SEWER PIPE
N.T.S.



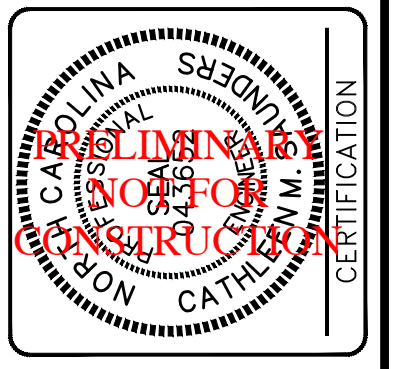
SECTION
GRAVITY SEWER EMBEDMENT CONDITIONS FOR RIGID SEWER PIPE
N.T.S.



SECTION
"SAW CUT" CONSTRUCTION/PATCH DETAIL
N.T.S.



QUIBLE & ASSOCIATES, P.C.
SINCE 1959
REGISTERED PROFESSIONAL ENGINEERS
REGISTERED PROFESSIONAL SURVEYORS
REGISTERED PROFESSIONAL LAND SURVEYORS
REGISTERED PROFESSIONAL CIVIL ENGINEERS
REGISTERED PROFESSIONAL ARCHITECTS
REGISTERED PROFESSIONAL ELECTRICAL ENGINEERS
REGISTERED PROFESSIONAL MECHANICAL ENGINEERS
REGISTERED PROFESSIONAL CHEMICAL ENGINEERS
REGISTERED PROFESSIONAL INDUSTRIAL ENGINEERS
REGISTERED PROFESSIONAL METALLURGICAL ENGINEERS
REGISTERED PROFESSIONAL NUCLEAR ENGINEERS
REGISTERED PROFESSIONAL AERONAUTICAL ENGINEERS
REGISTERED PROFESSIONAL AGRICULTURAL ENGINEERS
REGISTERED PROFESSIONAL BIOMEDICAL ENGINEERS
REGISTERED PROFESSIONAL ENVIRONMENTAL ENGINEERS
REGISTERED PROFESSIONAL FOOD ENGINEERS
REGISTERED PROFESSIONAL INDUSTRIAL ENGINEERS
REGISTERED PROFESSIONAL MARINE ENGINEERS
REGISTERED PROFESSIONAL MINING ENGINEERS
REGISTERED PROFESSIONAL PETROLEUM ENGINEERS
REGISTERED PROFESSIONAL TRANSPORTATION ENGINEERS
REGISTERED PROFESSIONAL WATER RESOURCES ENGINEERS
REGISTERED PROFESSIONAL WIND ENGINEERS
REGISTERED PROFESSIONAL POLYMER ENGINEERS
REGISTERED PROFESSIONAL RADIATION ENGINEERS
REGISTERED PROFESSIONAL SAFETY ENGINEERS
REGISTERED PROFESSIONAL SYSTEMS ENGINEERS
REGISTERED PROFESSIONAL THERMAL ENGINEERS
REGISTERED PROFESSIONAL WOOD ENGINEERS
REGISTERED PROFESSIONAL AERONAUTICAL ENGINEERS
REGISTERED PROFESSIONAL AGRICULTURAL ENGINEERS
REGISTERED PROFESSIONAL BIOMEDICAL ENGINEERS
REGISTERED PROFESSIONAL CHEMICAL ENGINEERS
REGISTERED PROFESSIONAL CIVIL ENGINEERS
REGISTERED PROFESSIONAL ELECTRICAL ENGINEERS
REGISTERED PROFESSIONAL ENVIRONMENTAL ENGINEERS
REGISTERED PROFESSIONAL FOOD ENGINEERS
REGISTERED PROFESSIONAL INDUSTRIAL ENGINEERS
REGISTERED PROFESSIONAL LAND SURVEYORS
REGISTERED PROFESSIONAL MECHANICAL ENGINEERS
REGISTERED PROFESSIONAL METALLURGICAL ENGINEERS
REGISTERED PROFESSIONAL MINING ENGINEERS
REGISTERED PROFESSIONAL NUCLEAR ENGINEERS
REGISTERED PROFESSIONAL PETROLEUM ENGINEERS
REGISTERED PROFESSIONAL TRANSPORTATION ENGINEERS
REGISTERED PROFESSIONAL WATER RESOURCES ENGINEERS
REGISTERED PROFESSIONAL WIND ENGINEERS
REGISTERED PROFESSIONAL POLYMER ENGINEERS
REGISTERED PROFESSIONAL RADIATION ENGINEERS
REGISTERED PROFESSIONAL SAFETY ENGINEERS
REGISTERED PROFESSIONAL SYSTEMS ENGINEERS
REGISTERED PROFESSIONAL THERMAL ENGINEERS
REGISTERED PROFESSIONAL WOOD ENGINEERS



THIS DOCUMENT IS THE PROPERTY OF QUIBLE & ASSOCIATES, P.C. ANY REPRODUCTION OR TRANSMISSION OF THIS DOCUMENT WITHOUT THE WRITTEN PERMISSION OF QUIBLE & ASSOCIATES, P.C. IS PROHIBITED.
IF THIS DOCUMENT IS NOT SIGNED AND SEALED BY A PROFESSIONAL ENGINEER, ARCHITECT, SURVEYOR, LAND SURVEYOR, CIVIL ENGINEER, MECHANICAL ENGINEER, ELECTRICAL ENGINEER, CHEMICAL ENGINEER, INDUSTRIAL ENGINEER, METALLURGICAL ENGINEER, NUCLEAR ENGINEER, AERONAUTICAL ENGINEER, AGRICULTURAL ENGINEER, BIOMEDICAL ENGINEER, ENVIRONMENTAL ENGINEER, FOOD ENGINEER, INDUSTRIAL ENGINEER, MARINE ENGINEER, MINING ENGINEER, PETROLEUM ENGINEER, TRANSPORTATION ENGINEER, WATER RESOURCES ENGINEER, WIND ENGINEER, POLYMER ENGINEER, RADIATION ENGINEER, SAFETY ENGINEER, SYSTEMS ENGINEER, THERMAL ENGINEER, WOOD ENGINEER, AERONAUTICAL ENGINEER, AGRICULTURAL ENGINEER, BIOMEDICAL ENGINEER, CHEMICAL ENGINEER, CIVIL ENGINEER, ELECTRICAL ENGINEER, ENVIRONMENTAL ENGINEER, FOOD ENGINEER, INDUSTRIAL ENGINEER, LAND SURVEYORS, MECHANICAL ENGINEER, METALLURGICAL ENGINEER, MINING ENGINEER, NUCLEAR ENGINEER, PETROLEUM ENGINEER, TRANSPORTATION ENGINEER, WATER RESOURCES ENGINEER, WIND ENGINEER, POLYMER ENGINEER, RADIATION ENGINEER, SAFETY ENGINEER, SYSTEMS ENGINEER, THERMAL ENGINEER, WOOD ENGINEER, OTHERWISE NOTED.

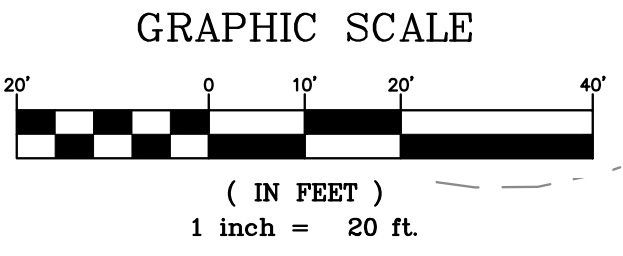
NO.	DATE	REVISIONS
1	09/25/23	ADDED USACE METALINE LINE CONFIRMATION DATE OF 9/12/23
2	07/19/24	REVISED PER COUNTY COMMENTS
3	06/11/24	REVISED PER COUNTY COMMENTS
4	06/11/24	REVISED PER COUNTY COMMENTS

UTILITY PLAN
CONSTRUCTION DRAWINGS
COROLLA BAY, SECTION 2
POPULAR BRANCH TOWNSHIP CURRITUCK COUNTY NORTH CAROLINA

PROJECT NO. P99006.1
DESIGNED BY CMS
DRAWN BY CMS
CHECKED BY MWS
ISSUE DATE 08/23/23
SHEET NO. 2 OF 2 SHEETS



NOTE: THE DATA GIVEN ON THESE PLANS IS BELIEVED TO BE ACCURATE, BUT THE ACCURACY IS NOT GUARANTEED. THE CONTRACTOR IS RESPONSIBLE FOR VERIFYING ALL LEVELS, LOCATIONS, TYPES, AND DIMENSIONS OF THE EXISTING UTILITIES PRIOR TO CONSTRUCTION. IF A DISCREPANCY IS FOUND, WORK SHALL CEASE AND THE ENGINEER NOTIFIED. WORK MAY CONTINUE UPON ENGINEERS NOTICE TO PROCEED.



CURVE	LENGTH	RADIUS	CHD LENGTH	CHD BEARING
C1	41.32	439.00	41.30	S 49° 34' 46" W
C2	60.02	41.50	56.78	N 41° 24' 33" E
C3	84.85	41.50	74.01	N 40° 21' 04" W
C4	18.60	29.00	18.49	N 79° 56' 53" W
C5	29.08	29.00	22.27	N 33° 55' 01" W